

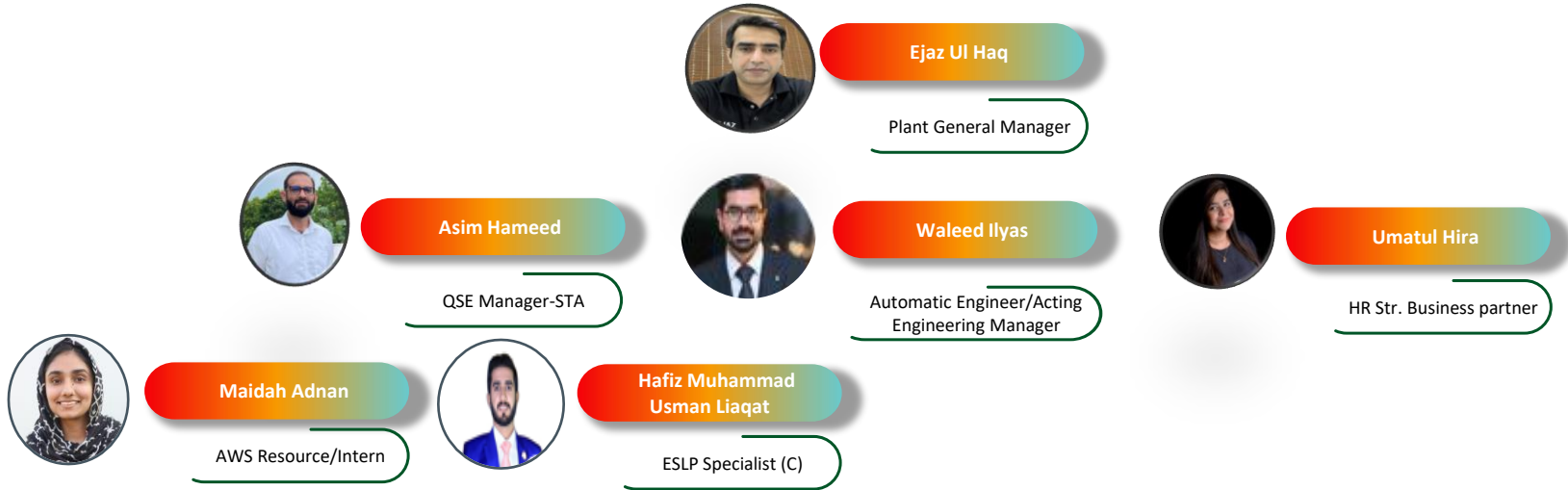


CPS Water related Internal Governance

Water related Internal Governance

- Raw Water Mapping/ Metering
- Wastewater Metering
- Water Balance/ Calculations
- Water Use Ratio Monitoring
- Bi-annual Inspection and Monitoring of Tube wells
- Bi-annual Raw water Quality Testing
- Annual Treated water Quality Testing
- Monthly Wastewater Quality Testing
- Quarterly Environmental Monitoring (Ground water and Wastewater)
- Daily inhouse Raw water and Treated water testing

CPS Pakistan Water Management Team



QSE Manager is responsible/accountable for the compliance of Water and Wastewater related Legal Requirements.

AWS Resource is hired to coordinate and execute the certification project.

Water resources expert (Geoscience Associates) has been engaged for data collection and technical studies.

External Stakeholder Engagement Team



Dr Faisal Hashmi

Head of External Affairs
& Stakeholder
Management



Hiba Dar

Senior Communication
Manager

**Geoscience Associates
(GSA)**

Water Resources
Expert/ Consultant